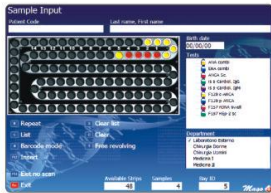


Easy to use software

The easy icon & keys helps the user to use the software with utmost convenience.



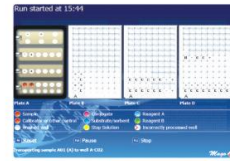
Main Screen



Sample Outlay Screen



Reagents Outlay Screen



Elisa plate outlay screen shot



Elisa plate outlay screen during processing : Each step can be viewed on the computer screen when the test procedure is running.

Colour change in each microwell & every step of the process can be visualised.

Incorrect processed well is indicated during the assay procedure.

Product Range

Allergy	Autoimmunity	IFA	Infectious Diseases	Hormones
- Mites	- ANA	- HEp-2	- HIV	- Tumour Markers (AFP/CEA/CA-125 etc.)
- Trees	- dsDNA	- Ctriihidia (dsDNA)	- HBV	- Diabetes (Insulin/GAD/C-Peptide etc.)
- Food	- ENA-6	- c-ANCA	- HCV	- Steroidal (Cortisol/Testosterone/Estradiol etc.)
- Epithelia	- ANCA	- p-ANCA	- TORCH range	- Fertility (LH/FSH/Prolactin etc.)
- Weeds	- ACA	- Control Sera	- EBV	- Thyroids (T3/T4/TSH/FT3/FT4 etc.)
- Insects	- Thyroid Panel	Many More....	- Helicobacter	Many More...
- Venoms	- Liver Panel		Many More....	
Many more...	- Gastroenteric Panel			
	Many More...			

Walk-away system that allows processing of samples in ELISA, IFA, Hemoagglutination (TPHA), seroagglutination (Widal, Wright) and Allergy (specific IgE capture procedure) simultaneously.

TECHNICAL SPECIFICATIONS

Sample Dispense	Probe with disposable carbonated tips 96 – 192 disposable tips
Sample Volume	Sample tube minimum: 200 µl Micro sample tube minimum: 100 µl
Tube Requirement	Tube height : 75-100 mm Tube diameter : 12-13 mm
Sample Capacity	104 samples per run, 192 pre- dilutions wells
Reagent Capacity	9 reagent bottles, 18 position for tubes
Wash Manifold	16 needles - 8 channel wash delivery, 8 channel wash aspiration
Measurement range	0.000-3.000 OD
Wavelength range	400-800 nm
Accuracy	±1% and ±0.005 OD at 1.500 OD
Precision	±0.5% and ±0.005 OD at 1.500 OD
Reading speed	7 seconds
Interference filters	405,450,492,620 nm & 2 optional
Light source	Halogen lamp
Barcode Reader	Positive bar-code sample identification
Sample Reagents (Optional)	Handheld, reads up to 30 alphanumeric characters Barcode Symbology Code 128, Code 39, Coda bar, Interleaved 2 of 5
LIS Interface	RS232, bi-directional
Length	47.25 in (120 cm)
Depth	23.6 in (60 cm)
Height	27.5 in (70 cm)
Width	26 in (66 cm)
Weight	approximately 200 lbs (90 kg)
Operating Environment	Temperature: 10-30° C
Humidity	0- 80% (non-condensing)
Altitude	< 1.3 miles (2000 meters)
Power Requirements	115-230 V ; 50/60 Hz 4-7 A grounded 3-plug outlet



Mago 4

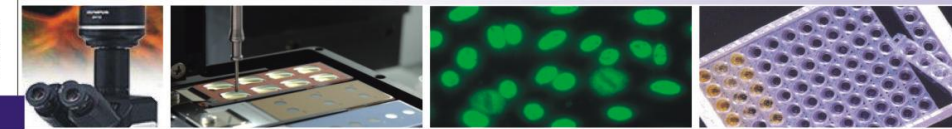
Fully Automated ELISA and IFA Processor

Now 1 = 2

ELISA & IFA... Simultaneously

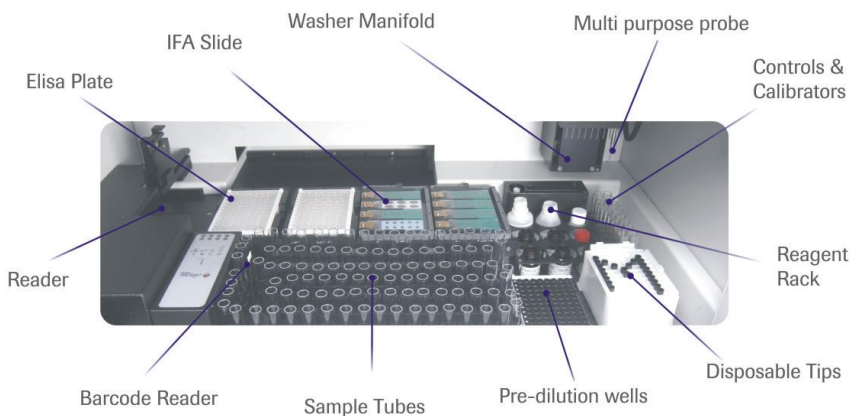


Specifications subject to change without notice.



Delta Biologicals Srl

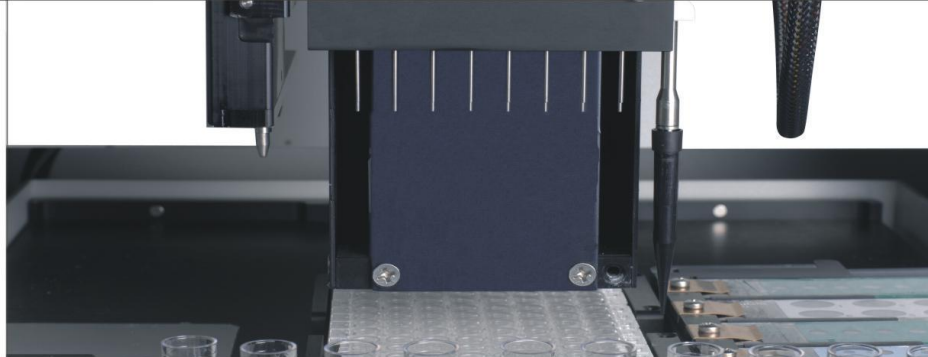
Via Nicaragua, 12 / 14 00040 Pomezia (Roma) Tel : +39 06 911 90 Fax : +39 06 910 52 44 Website : www.deltabiologicals.com



Benefits of complete automation.....quality, speed, reliability, high throughput, combination of all ELISA & IFA parameters in a single versatile & steady system.

Total Automation of following procedures :

- Loading of work sheet directly from host or keyboard
- Positive bar-code sample identification
- Samples and reagents dilutions
- Samples and reagents dispensing
- Incubation
- Washing
- Reading (single, double, triple wavelength)
- Automatic internal Quality Control evaluation
- Data storage



Features :

- 4 Elisa Plates for 12 test per plate or 16 IFA slides.
- Single teflon-steel needle with disposable tips option (both with liquid level sensor) for samples and reagents
- IFA slides washing step is performed by the needle on a well by well basis to avoid any risk of cross - reaction
- Easy and prompt loading of slides into slide holders
- IFA tests on slides are performed as screening and / or titration, with a serial dilution capability
- Disposable tips capability for pipetting of samples, controls & calibrators
- One specific reagent-rack for Reagent bottles (diluent, conjugates, substrates) and for tubes (standards, controls, samples, pre-dilution etc)
- Reagent rack is a removable device so that once loaded can be stored & reused in subsequent runs of the same type
- Washing manifold with 16 probes, 8 for aspiration (longer) and 8 for dispensing (shorter)
- The automated well washing performed at customized volumes and cycles
- Dedicated drawer for high volume bottles (2 liters each, wash buffers, distilled water, waste) with individual liquid level sensors
- An independent incubation modules for each plate (from RT upto 55°C)
- Windows XP software platform



- Multilingual and intuitive software
- Positive samples and reagents identification
- Customized medical report
- Complete integration with LIS system
- Result can be exported in excel format
- Levey-Jennings and Westgard's rules programs on board

Flexible options :



35 tubes 96 tips

Total capability: 139 tubes and 96 disposable tips per batch

35 tubes 96 pred.

Total capability: 104 tubes and 96 predilution wells

Total capability: 104+35+35= 174 tubes per batch

35 tubes 35 tubes

Total capability: 104 tubes and 192 disposable tips per batch

96 disposable tips 96

Total capability: 104 tubes and 192 predilution wells per batch

96 predilution wells 96

Total capability: 104 tubes and 96 predilution wells and 96 disposable tips

96 tips 96 pred